

Exaquantum Explorer Full Screen on Multiple Monitors

KB-0057-22

Document Summary	
Article Type	User Guide
Products Affected	Exaquantum
Versions Affected	R3.00 - R3.40
Function Affected	Exaquantum Explorer Full Screen Option on multiple monitor setup
Available Resolution	Work Around
Audience	System Integrator, Administrators, Engineer, Users
Summary	Full screen automatically sets on Windows designated primary monitor
Review Date	Document to be reviewed before July 2024

Blank Page

Table of Contents

- Table of Contents 1
- Chapter 1 Introduction 2**
 - 1.1 Audience..... 2
- Chapter 2 Issue Description 3**
 - 2.1 Full Screen Issue 3
- Chapter 3 Workarounds 4**
 - 3.1 Single Exaquantum Explorer Document..... 4
 - 3.2 Workbook Document 5
- Chapter 4 Further Reading..... 6**
 - Copyright and Trademark Notices 7
 - Highlights..... 8

Chapter 1 Introduction

Exaquantum Explorer allows documents to be viewed in full screen mode, if the user has a multiple monitor setup and the document is moved to one of the additional monitors and the 'Full Screen' mode is selected the document will revert to the Windows designated primary monitor.

This document will describe the work around for the issue when using multiple screens and setting the Exaquantum Explorer to be full screen.

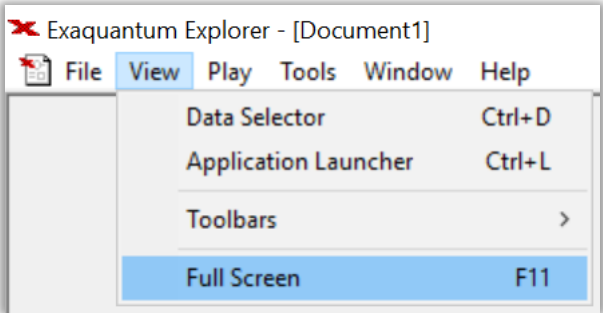
1.1 Audience

This guide is intended for System Integrators, Administrators, Engineers and Users.

Chapter 2 Issue Description

2.1 Full Screen Issue

When a system is using multiple monitors if the user opens one or multiple Exaquantum Explorer mimics and selects 'Full Screen' the mimic will open full screen only on the screen that is designated as screen 1 in Windows, If the mimic is on a screen that is not designated as screen 1 the mimic will jump to screen 1.



This can be an issue if there is a requirement to show multiple Exaquantum Explorer screens full screen on multiple monitor.

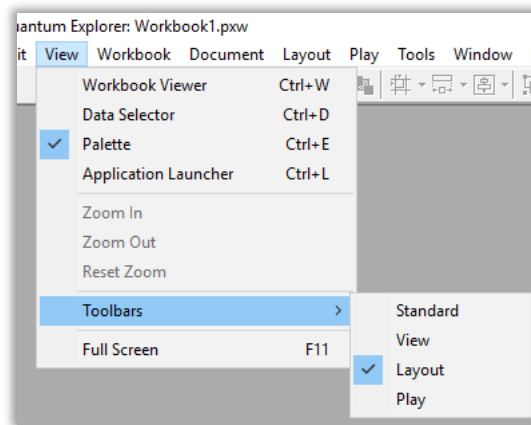
Chapter 3 Workarounds

There is no fix for this issue, the two workarounds allow as much of the explorer document to be shown without selecting full screen.

3.1 Single Exaquantum Explorer Document

When opening a single Exaquantum Explorer document it can be opened so there are no scroll bars and no buttons on the top menu.

The only visible controls is the menu bar, you can do this by deselecting the Standard, View and Play Toolbars, making sure the mimic is saved to keep the settings once closed.



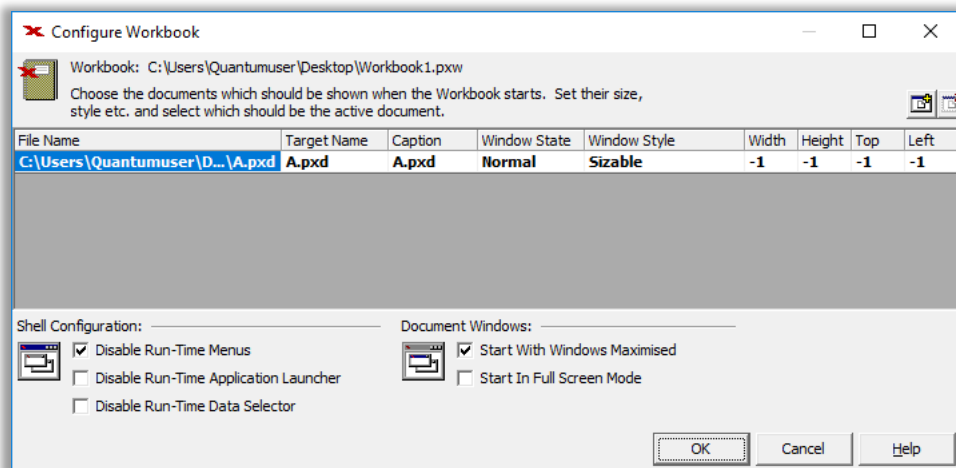
The scrollbars will not display if the size of the graphic is bigger than the monitor size, if the mimic is maximised and the scrollheight and scrollwidth of the frame/view is set to be smaller than the resolution of the monitor.

Set the scrollheight and scrollwidth of the frame/view of the Exaquantum Explorer document to 40 and 60.

3.2 Workbook Document

The other option is to make a workbook for the graphics and set 'Disable Run-Time Menus' and 'Start With Windows Maximised'.

These settings will open the graphic maximised with no menu bar. The play and stop button is displayed, this can be dragged off the top bar which gives a full screen. Also if the user is not in the QExploreDesign group the play and stop button will not be visible, as this only allows the users to view pxd in run mode.



Chapter 4 Further Reading

For more information on Exaquantum Explorer please review the following documents:

- IM 36J40A12-01EN Exaquantum/Explorer User's Manual Volume 1
- IM 36J40A12-02EN Exaquantum/Explorer User's Manual Volume 2
- IM 36J40A12-03EN Exaquantum/Explorer User's Manual Volume 3
- IM 36J40A12-04EN Exaquantum/Explorer User's Manual Volume 4

More support is available at www.ymx.yokogawa.com/support or from support.ymx@yokogawa.com email address.

Copyright and Trademark Notices

© 2022 Yokogawa Electric Corporation

■ All Rights Reserved

The copyright of the programs and online manuals contained in the software medium of the Software Product shall remain with YOKOGAWA.

You are allowed to print the required pages of the online manuals for the purposes of using or operating the Product; however, reprinting or reproducing the entire document is strictly prohibited by the Copyright Law.

Except as stated above, no part of the online manuals may be reproduced, transferred, sold, or distributed to a third party in any manner (either in electronic or written form including, without limitation, in the forms of paper documents, electronic media, and transmission via the network).

Nor it may be registered or recorded in the media such as films without permission.

■ Trademark Acknowledgements

- CENTUM, ProSafe, Exaquantum, Vnet/IP, PRM, Exaopc, Exaplog, Exapilot, Exasmoc and Exarqe are registered trademarks of Yokogawa Electric Corporation.
- Microsoft, Windows, Windows Server, SQL Server, Excel, Internet Explorer, SharePoint, ActiveX, Visual Basic, Visual C++, and Visual Studio are either registered trademarks or trademarks of Microsoft Corporation in the United States and other countries.
- Adobe and Acrobat are registered trademarks of Adobe Systems Incorporated and registered within particular jurisdictions.
- Ethernet is a registered trademark of XEROX Corporation.
- All other company and product names mentioned in this manual are trademarks or registered trademarks of their respective companies.
- We do not use TM or ® mark to indicate those trademarks or registered trademarks in this manual.
- We do not use logos in this manual.

Highlights

The Highlights section gives details of the changes made since the previous issue of this document.

- **Summary of Changes**

This is Issue 2.0 of the document related to Product Library version 2.0.

- **Detail of Changes**

The changes are as follows:

Chapter/Section/Page	Change
Front page	Versions Affected & Review Date updated
Page 6	Email address updated